

9\*

**THEFTORD**

Serial ID 

Item Number \_\_\_\_\_

Item Description \_\_\_\_\_

E+ 10R-05 3413

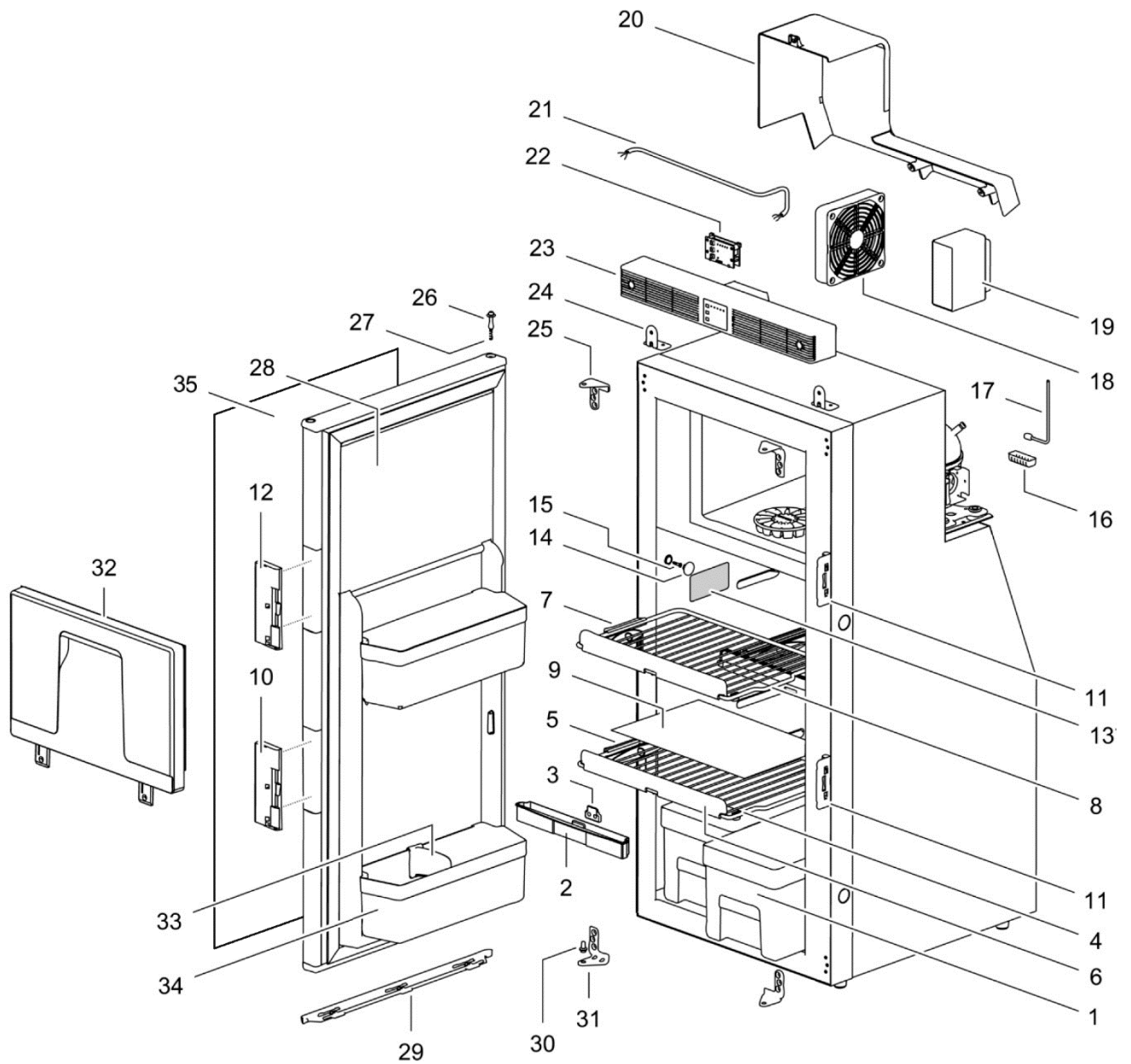
CE

Top Volume	Bottom Volume	Top Volume	Bottom Volume
Volume (L)	Volume (L)	Volume (L)	Volume (L)
Volume (L)	Volume (L)	Volume (L)	Volume (L)
Volume (L)	Volume (L)	Volume (L)	Volume (L)
Volume (L)	Volume (L)	Volume (L)	Volume (L)
Volume (L)	Volume (L)	Volume (L)	Volume (L)
Volume (L)	Volume (L)	Volume (L)	Volume (L)
Volume (L)	Volume (L)	Volume (L)	Volume (L)
Volume (L)	Volume (L)	Volume (L)	Volume (L)
Volume (L)	Volume (L)	Volume (L)	Volume (L)

**SPECIMEN**

		Spare part number	Spare part number	Spare part number	Colours available
1	Vegetable bin (2x)	691220			
2	Shelf large		691585		
3	Clip shelf large			691584	
4	Shelf food retainer				
5	Shelf small				
6	Clip shelf small				
7	Door lock plate		691580		
8	Door handle				
9	Identification label*	T1090 <b>MK1</b> begins with item number <b>N181AXXXXXXX</b>			
10	Thermistor cover		691390		
11	Thermistor				
12	Condensor fan	691392			
13	Control module	691391			
14	Air duct	691331			
15	Power cord	691345			
16	Control PCB		691746		
17	Control housing				
18	Control housing bracket (2x)	691591			
19	Hinge plate upper		691587		
20	Hinge pin upper				
21	Hinge spring				
22	Hinge pin bottom				
23	Hinge plate bottom				
24	Cabinet door				
25	Panel retainer lower				
26	Drainage pan snap (2x)		691583		
27	Drainage pan				
28	Drainage pan plug/connecting strap				
29	Screw (4x)		691590		
30	Cap (4x)				
31	Freezer door		691588		
32	Magnet freezer door				
33	Bottle retainer		691593		
34	Door bin 2x				
35	Plate	691592			
36	Decopanel 882x395x1.2mm	69163627SP			

\* With a request for information or service, always provide the serial number of the refrigerator. The serial number is the code below the barcode on the identification label.



13\*

		Spare part number	Spare part number	Spare part number	Colours available
1	Vegetable bin (2x)	691220			
2	Drip tray		691740		
3	Bracket				
4	Shelf large		691585		
5	Clip shelf large				
6	Shelf food retainer			691584	
7	Shelf small				
8	Clip shelf small				
9	Plate	691592			
10	Door handle lower		691580		
11	Door lock plate			691580	
12	Door handle upper				
13	Identification label*	T1090 <b>MK2</b> begins with item number <b>N191AXXXXXXX</b>			
14	Cap (4x)		691590		
15	Screw (4x)				
16	Thermistor cover		691390		
17	Thermistor				
18	Condenser fan	691392			
19	Control module	691391			
20	Air duct	691331			
21	Power cord	691345			
22	Control PCB		691742		
23	Control housing				
24	Control housing bracket (2x)	691591			
25	Hinge plate upper		Handle high (12) 691743	Handle low (10) 691744	
26	Hinge pin upper				
27	Hinge spring				
28	Cabinet door				
29	Panel retainer lower				
30	Hinge pin bottom				
31	Hinge plate bottom				
32	Freezer door		691741		
33	Bottle retainer		691593		
34	Door bin 2x				
35	Decopanel 882x395x1.2mm	69163627SP			

\* With a request for information or service, always provide the serial number of the refrigerator. The serial number is the code below the barcode on the identification label.